

FLUTE FINGERING CHART



FLUTE	THE NEXT STEP	FINGERING CHART
--------------	----------------------	------------------------

ENHARMONICS

A# = Bb

C# = Db

D# = Eb

F# = Gb

G# = Ab

Enharmonics are notes that are the same pitch but written differently. Example below G# = Ab same sound written differently.

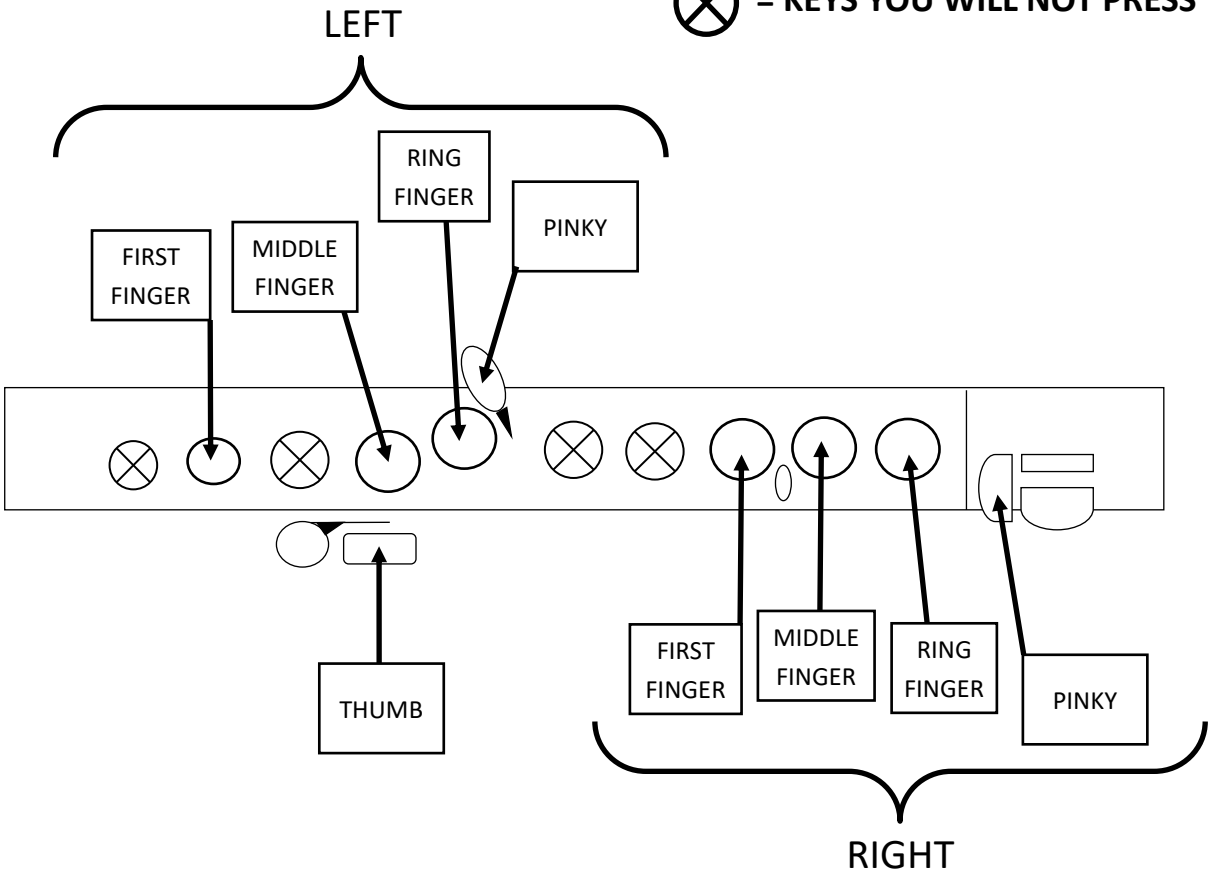


G# = Ab



FINGERINGS

⊗ = KEYS YOU WILL NOT PRESS

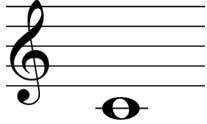
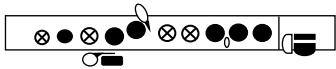


FLUTE

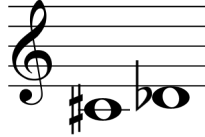
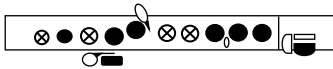
THE NEXT STEP

FINGERING CHART

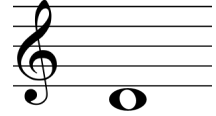
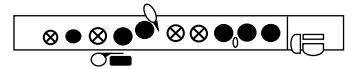
C



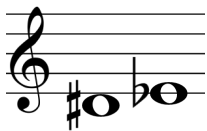
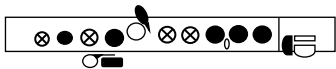
C#/Db



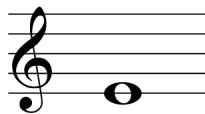
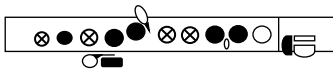
D



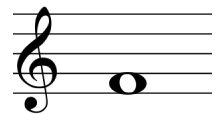
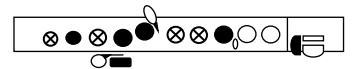
D#/Eb



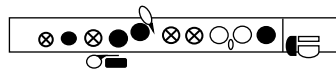
E



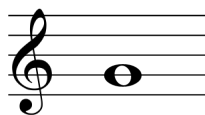
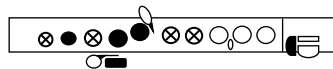
F



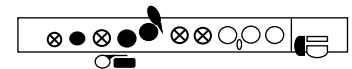
F#/Gb



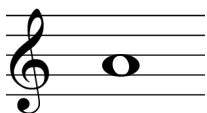
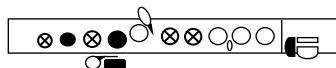
G



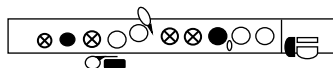
G#/Ab



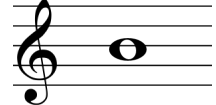
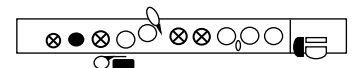
A



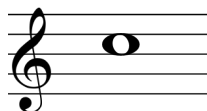
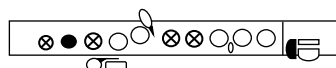
A#/Bb



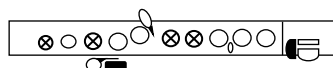
B



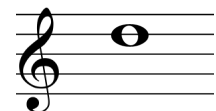
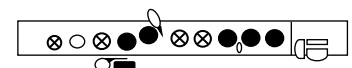
C



C#/Db



D

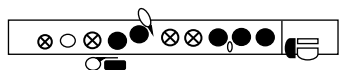


FLUTE

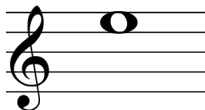
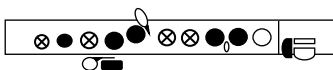
THE NEXT STEP

FINGERING CHART

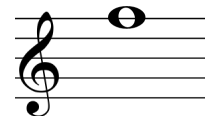
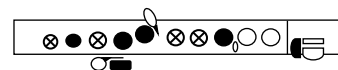
D#/Eb



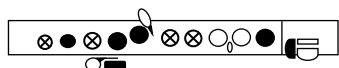
E



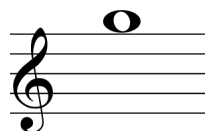
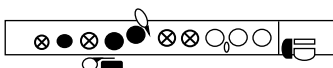
F



F#/Gb



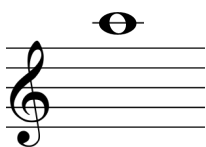
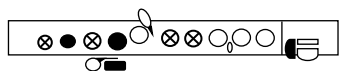
G



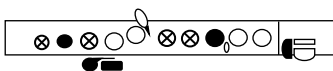
G#/Ab



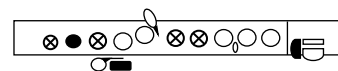
A



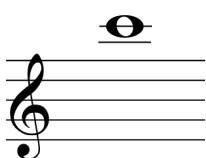
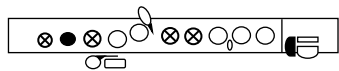
A#/Bb



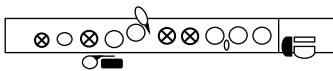
B



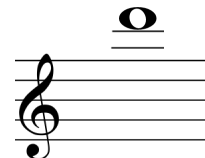
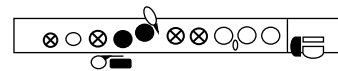
C



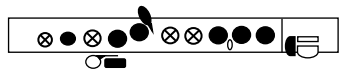
C#/Db



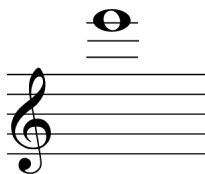
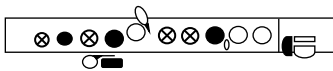
D



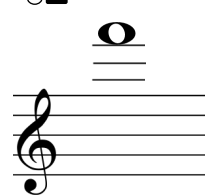
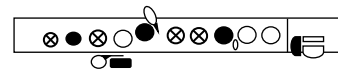
D#/Eb



E



F

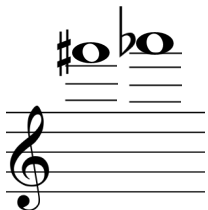
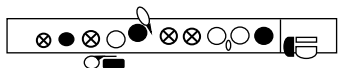


FLUTE

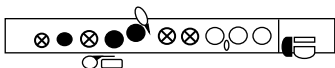
THE NEXT STEP

FINGERING CHART

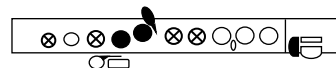
F#/Gb



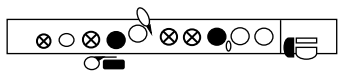
G



G#/Ab



A



A#/Bb

